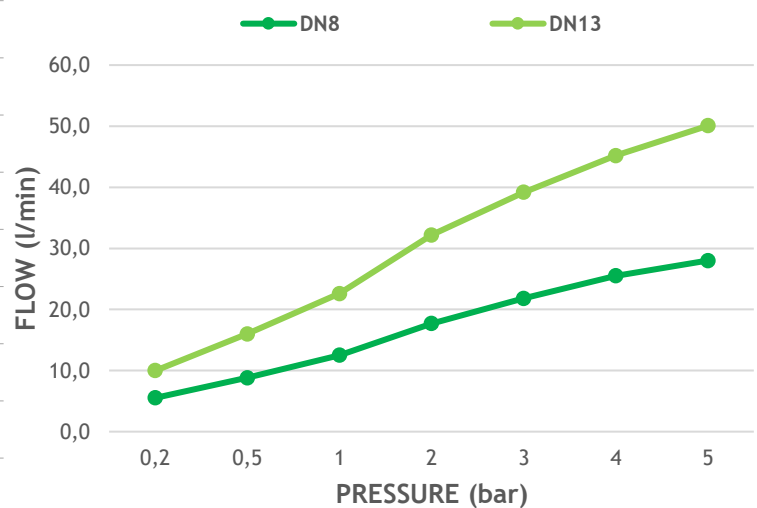




Technical specifications (*)

Assembly torque	10 - 12 Nm
Rotation angle	180°
Working pressure (recommended)	1 - 5 bar
Pressure resistance - ASME A112	35 bar
Burst pressure	>50 bar
Hammer test	8-50 bar (200 cycles)
Life cycle - EN200/NF 077 (U ₃)	500.000 cycles
Life cycle - ASME A112	500.000 cycles
Max. Hot water	90 °C
Max. Hot water recommended	65 °C
Flow rate at 3 bar (free flow)	DN8: 21,8 l/min DN13: 39,2 l/min
Turn left - right	0.100 - 0.200 Nm

Flow rate curve

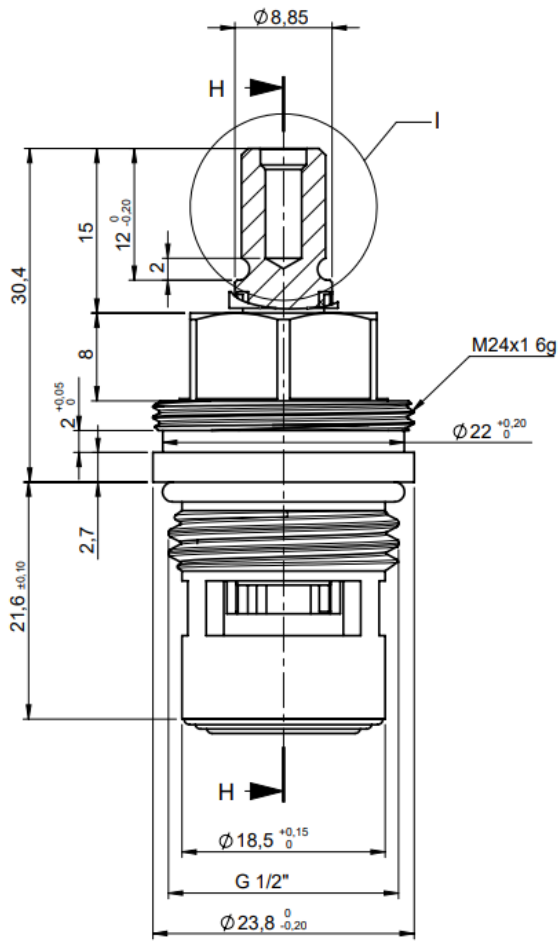


(*) Measured with Sedal's faucet

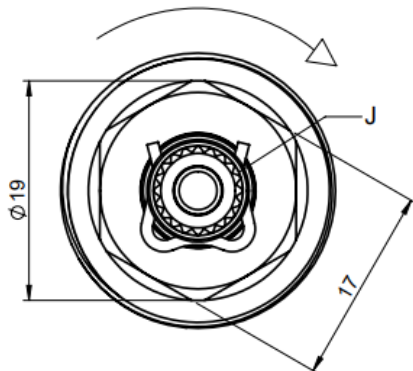
Cer. HW 180 RTC

19MC018R13

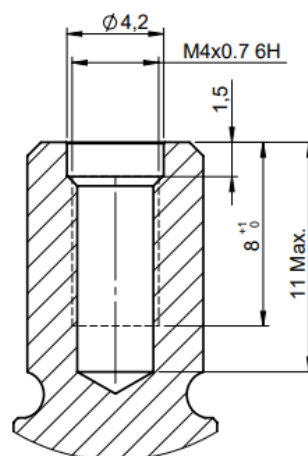
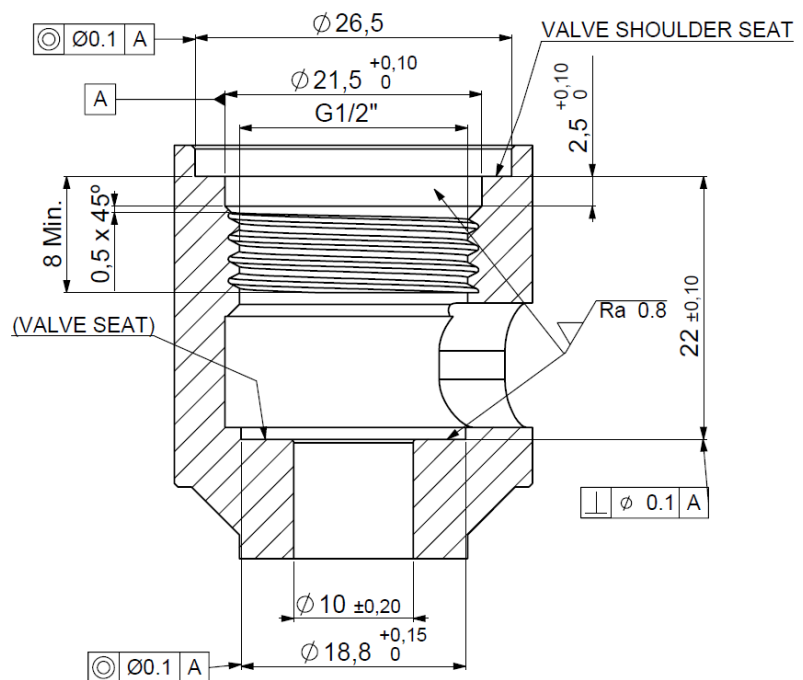
Technical dimensions



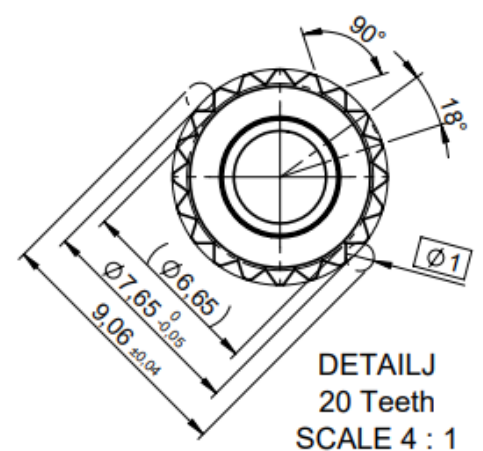
CLOSING DIRECTION RTC



Machining tips



DETAIL I
SCALE 4 : 1



DETAIL J
20 Teeth
SCALE 4 : 1