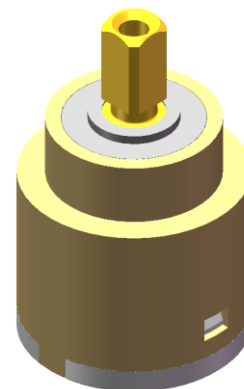


DIVERTER M4 GD-25 S/D

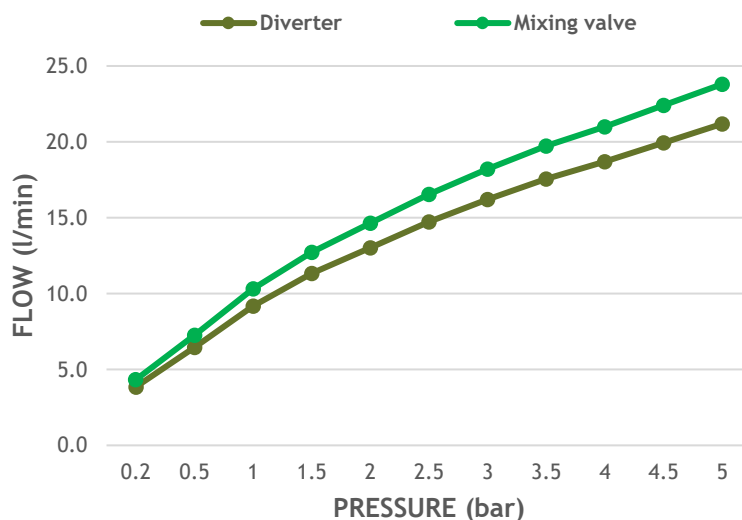
25 mm rotary cartridge
08GD25S0003



Technical specifications

Prescribed tightening torque ⁽¹⁾	7-8 Nm
Rotation angle	90°
Working pressure (recommended)	1 - 5 bar
Burst pressure	>35 bar
Life cycle EN-817 Diverter Mixing valve	30,000 cycles 70,000 cycles
Max. Hot water	90 °C
Max. Hot water recommended	60 - 65 °C
Flow rate @ 3 bar (DN8) ⁽²⁾	
Free flow as a diverter	16,2 l/min
Free flow as a mixing valve (mix)	18,2 l/min
Operation torque without water pressure	
Turn left-right	0,20 - 0,40 Nm

Flow rate (DN8) ⁽²⁾

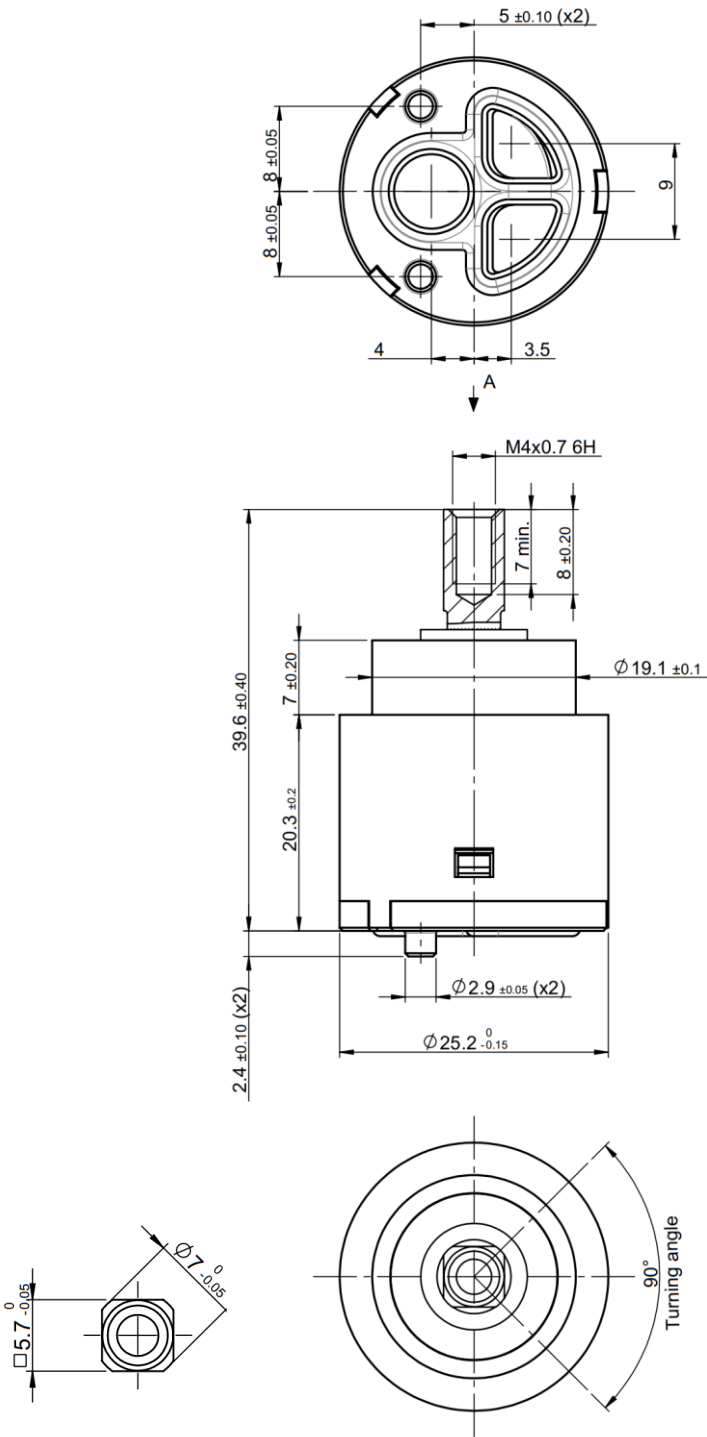


Prescribed tightening torque is related to faucet body and nut both in brass material, pitch 1,25mm and no lubricant used on the threads. For other faucet body - nut material combinations please contact SEDAL.

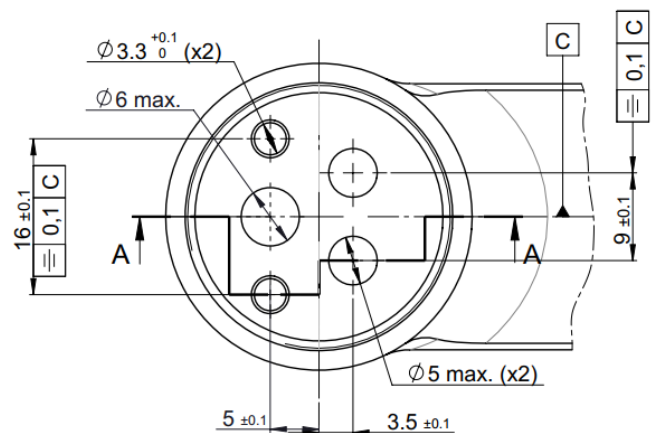
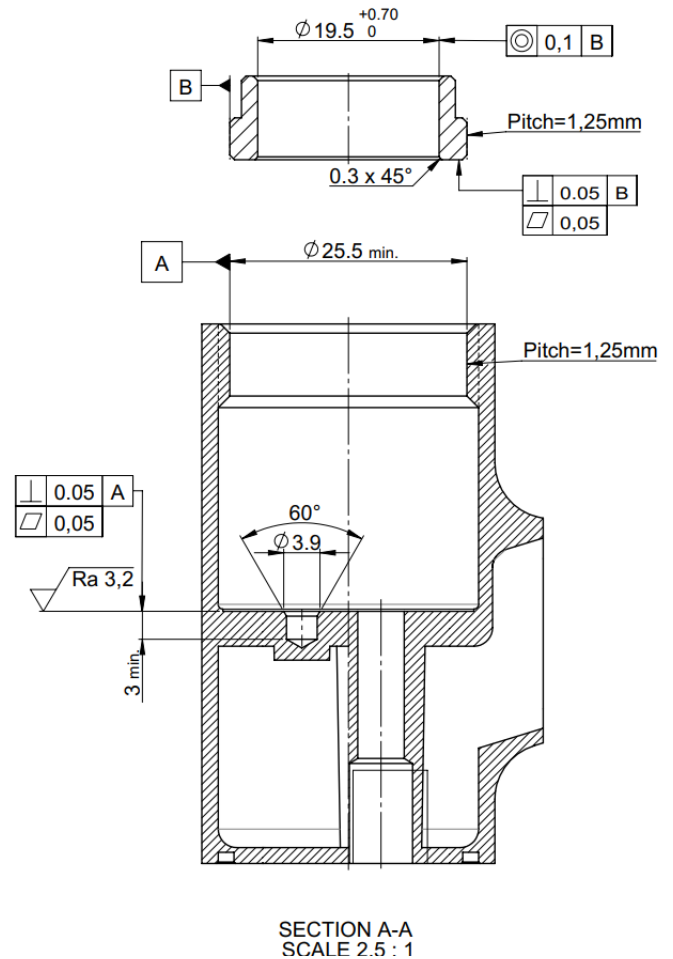
⁽²⁾ measured with SEDAL faucet.

Rotary cartridge 25mm
Diverter M4
DIVERTER
GD-25 S/D

Technical dimensions (3)



Machining prescription (4)



- (3) Dimensions of the cartridge assembled into the faucet (without vertical gap between the cover and the base)
(4) Sealing surfaces must be free of burrs and sharp areas. The faucet body must be free of debris