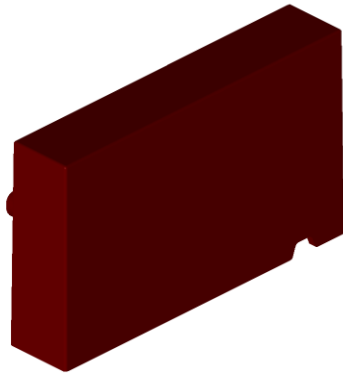


IR SENSOR S9 FOR iREDplus

Ref. 27EI000021



TECHNICAL SPECIFICATIONS

GENERAL	
Technology	Active IR sensor
Rated Impulse voltage	6 V DC
Maximum power	<4 W
Standby power	<0,2 mW
Ingress Protection Rating	IP67
Water Saving Function	Auto close after 60s
Undervoltage protection	Yes
INFRARED DETECTION	
Detection range (white card)	5 -40 cm
Detection distance adjustment	Box button
Sampling period	256ms
CABLE	
Cable length	180 cm
Connector	GX16-4pin / Female

DESCRIPTION

Active infrared sensor to be installed at the spout and especially devised for washbasins applications. The sensor must be connected to iREDplus box.

FEATURING

- Detection distance. The sensor switches to "adjustable mode" by pressing the box button.
- Water saving: the system sends CLOSE signal to the valve after 60s of continuous detection.
- Power options:
 - AC wall power supply
 - DC batteries
 - AC & DC
- Undervoltage protection: the system goes into "Undervoltage Mode" when the batteries voltage is low ensuring the valve will not remain open until batteries are replaced.

TECHNICAL DIMENSIONS

